

# Alan Davie: Beginning of a Far-off World

24 June 2022 – 24 September 2022

This guide provides a detailed description of the ***Alan Davie: Beginning of a Far-off World*** exhibition space. It has been designed with Autistic Spectrum Disorder (ASD) visitors in mind and the understanding that there is a continuum of sensory perceptual differences for autistic people. The information presented here is to offer prospective visitors who are hyper- or hypo-sensitive to sensory stimuli an understanding of the gallery environment before they attend. By providing specific information on the kind of sensory stimuli that one might encounter in the exhibition space, it is hoped that prospective ASD visitors, their family and friends, can make an informed decision about the comfort of their visit.

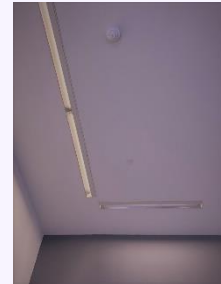
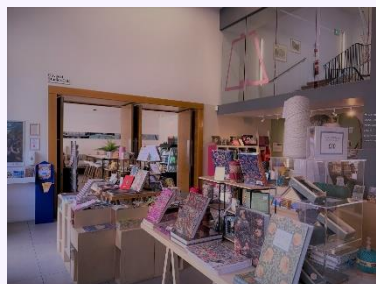
## Entrance

The entrance to Dovecot Studios is on Infirmary Street. There are two main entrance doors. The white double doors on the right-hand side offer step-free access, suitable for those who use wheelchairs. If the door is shut, as it often is, you can either knock on the door or ring the top left buzzer to alert the front desk of your arrival. The left hand door has two stone steps leading up to it. Both of these doors lead you directly into the Dovecot Studio's shop.

This room is tall and bright with white walls. The brightness of this room comes from natural light flooding through the north facing windows. There are also fluorescent strip lights sunk into the high ceiling. The light intensity level of this entrance foyer can range between 50 and 120 lux according to the weather.

This room extends to the left straight into the Dovecot Studios Café. The door between the café and the shop is often open and sounds from the café can carry through. Expect sounds relating to a café environment; coffee machines, fridges, crockery and cutlery and general chatter of visitors.

Along the back wall of the shop, you can find the helpdesk. Here you can ask for assistance, buy tickets, or purchase items from the gift shop.

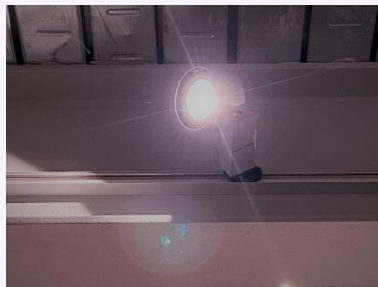


## Exhibition Space

**Alan Davie; Beginning of a Far-off World** is a singular room to the right of the entrance. Through a set of wide double doors, you'll enter a spacious, low lit and temperature controlled room. This is a step-free entrance. The walls are painted in a bespoke off-white paint known as Mountain Ice.

Hung on the walls you will find drawings, oil paintings and small framed tapestries. As some of these are framed behind glass, at certain angles you may experience a glare from the spotlights. Similarly, there is a collection of photographs that are displayed in a glass topped display table which can also catch the glare of the spotlights. Beside many of the works you will find informational texts printed onto adhesive clear vinyl, while not as reflective as glass this vinyl does also catch the light. The brightness of the angled spotlights varies throughout the space according to which artworks they are illuminating. The Light intensity levels reach a maximum of 190 lux. All windows in this room are covered.

Ambient noise in the gallery is muted. There is, however, a continuous low hum that can be heard from the ventilation system. At the back of the room, you can find a bench. Alongside this bench is a plinth that holds a set of headphones which plays a selection of Alan Davies jazz compositions.



## Toilet Facilities

From the gallery you can access single sex toilets as well as a separate accessible toilet via a ramped corridor. The corridor is dimly lit and painted with the same off-white paint. Baby change facilities can be found in the accessible toilet.

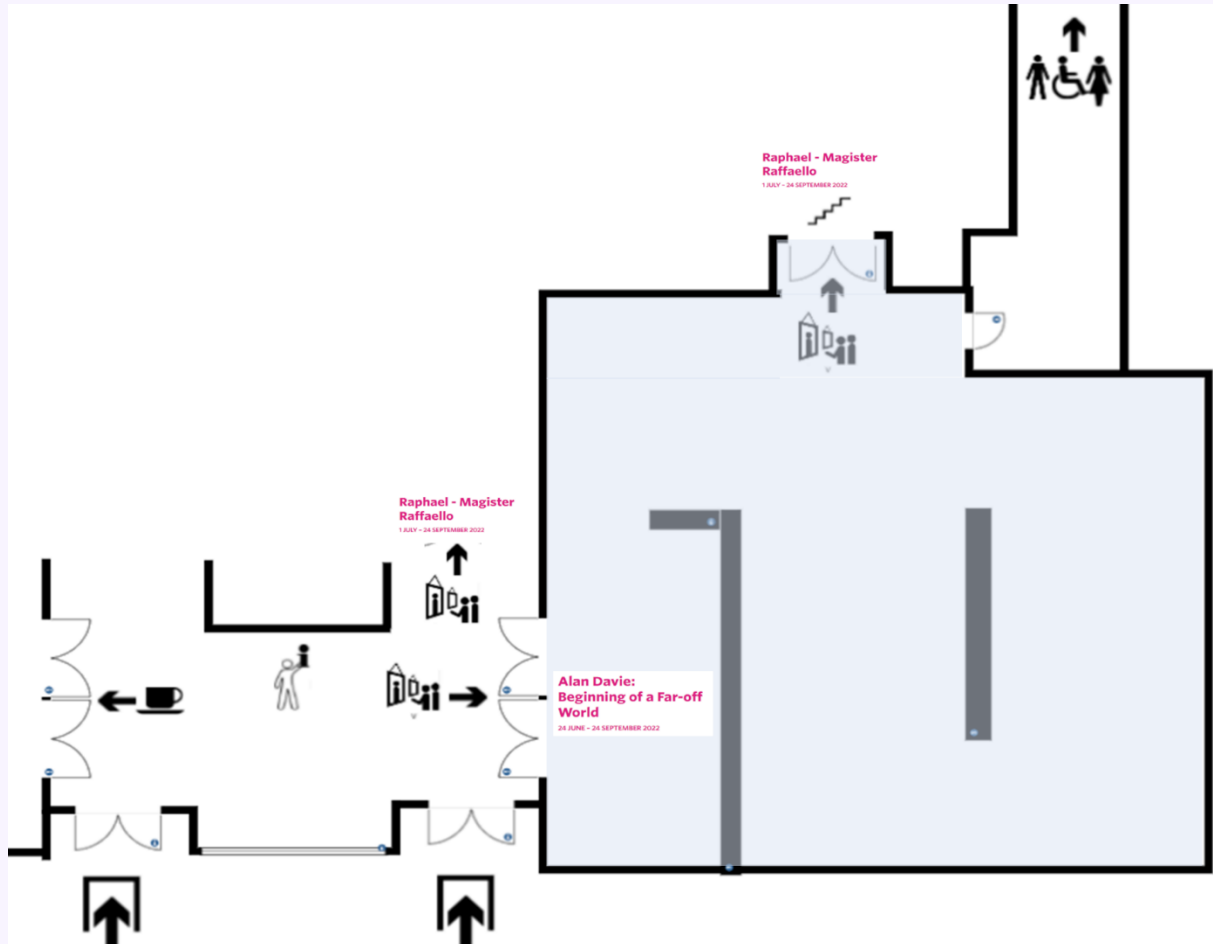


## Exploring Dovecot Studios Further

From 1 July 2022 – 24 September 2022 your General Admission ticket will include entry to the *Raphael: Magister Raffaello* exhibition in the adjacent gallery. For information about accessibility for

the Dovecot Studio's other exhibition spaces please see the [Dovecot Studio's Access Guide](http://www.dovecotstudios.com/visit/access) on their website ([www.dovecotstudios.com/visit/access](http://www.dovecotstudios.com/visit/access))

## Map



Map not drawn to scale